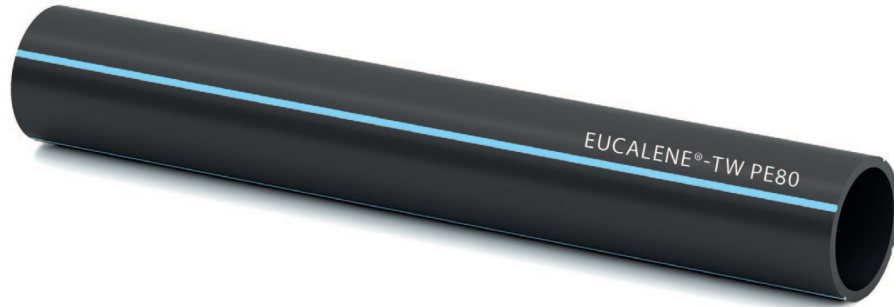










## TW PE80 – Potable water pressure pipes

according to

**EN12201-2, DIN 8074, DIN8075, DVGW GW335-A2**



Outside diameter in mm	Pressure class	SDR class	Quality labels
20-63	PN12,5	SDR11	     

- Potable water labels :** BELGAQUA, KTW, ÖVGW
- Marking :** Longlife Print System, abrasion resistant marking in white with additional metric marking for coils and drums
- Pipe ends :** smooth
- Colour :** RAL9005 black with 4 blue stripes RAL 5012

All information given is indicative only and not binding and can be subject to change without notice.