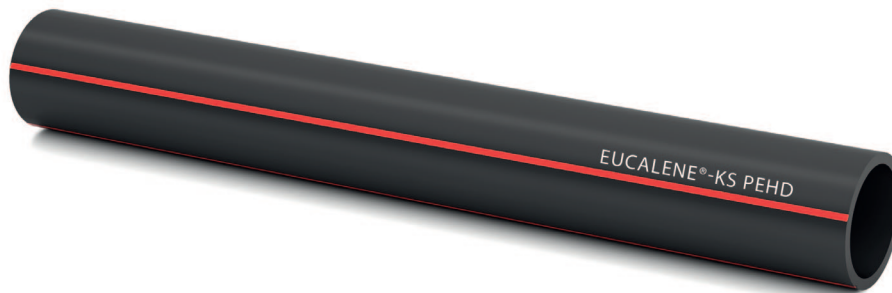




KS PEHD – Cable protection pipes

according to
DIN16842



Outside diameter in mm	SDR class
63-400	SDR17,6
63-400	SDR13,6
20-400	SDR11

Application	
Permitted installation	EUCALENE®-KS PEHD
Open trench installation with sand bed	✓
Open trench installation without sand bed	✓
Ploughing and milling	✓
Relining	✓
Horizontal directional drilling	✓

Marking : Longlife Print System, abrasion resistant marking in white with additional metric marking for coils and drums
Pipe ends : smooth
Colour : RAL9005 black with 4 red stripes RAL3002

All information given is indicative only and not binding and can be subject to change without notice.