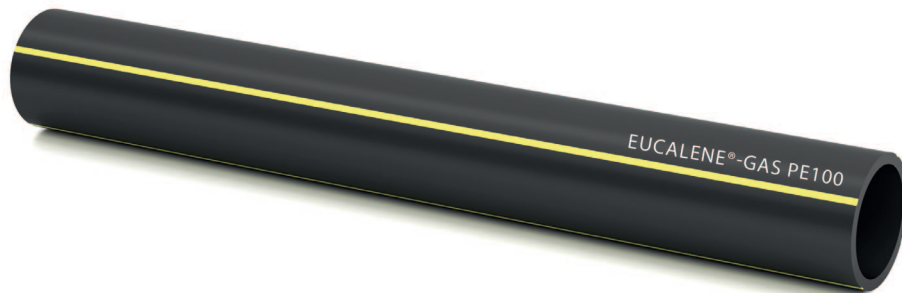




## **GAS PE100 – Pressure pipes for gas**

according to

**EN1555-2, EANDIS, ORES, SIBELGA, G001 CDC 04.2010**



| Dimension in mm | SDR-class | Lengths   |
|-----------------|-----------|-----------|
| 63 x 5,8        | SDR11     | 6 m; 50 m |
| 160 x 14,6      | SDR11     | 14 m      |
| 200 x 18,2      | SDR11     | 14 m      |
| 315 x 28,6      | SDR11     | 14 m      |
| 110 x 6,6       | SDR17     | 14 m      |
| 160 x 9,5       | SDR17     | 14 m      |
| 200 x 11,9      | SDR17     | 14 m      |

**Marking :** Abrasion resistant marking in white with additional metric marking for coils

**Pipe ends :** smooth

**Colour :** RAL9005 black with 4 zinc yellow stripes RAL1018

All information given is indicative only and not binding and can be subject to change without notice.