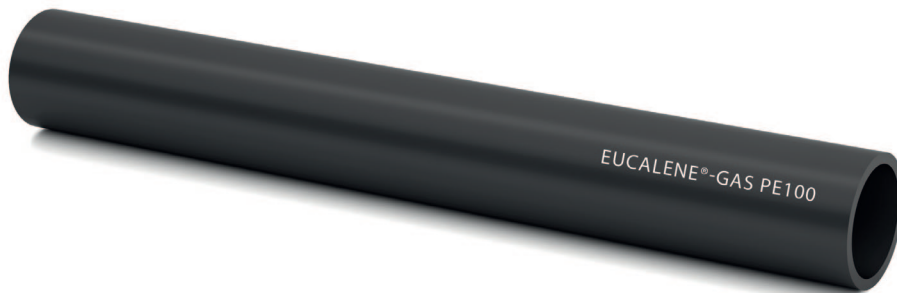




## GAS PE100 – Pressure pipes for gas

according to

**EN1555-2, EANDIS, ORES, SIBELGA, G001 CDC 04.2010**



Dimension in mm	SDR-class	Lengths
32 x 3,0	SDR11	6 m; 50 m
40 x 3,7	SDR11	6 m; 50 m
63 x 5,8	SDR11	6 m; 50 m
160 x 14,6	SDR11	14 m
200 x 18,2	SDR11	14 m
315 x 28,6	SDR11	14 m
110 x 6,6	SDR17	14 m
160 x 9,5	SDR17	14 m
200 x 11,9	SDR17	14 m

**Marking :** Abrasion resistant marking in white with additional metric marking for coils  
**Pipe ends :** smooth  
**Colour :** RAL9005 black

All information given is indicative only and not binding and can be subject to change without notice.