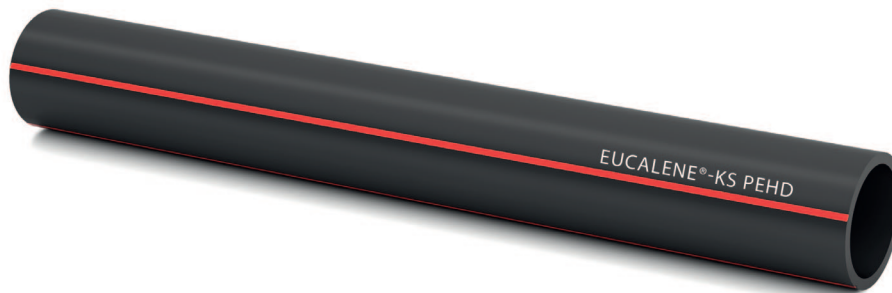




KS PEHD – Cable protection pipes

according to
DIN16842



| Outside diameter in mm | SDR class |
|------------------------|-----------|
| 63-400 | SDR17,6 |
| 63-400 | SDR13,6 |
| 20-400 | SDR11 |

| Application | |
|---|-------------------|
| Permitted installation | EUCALENE®-KS PEHD |
| Open trench installation with sand bed | ✓ |
| Open trench installation without sand bed | ✓ |
| Ploughing and milling | ✓ |
| Relining | ✓ |
| Horizontal directional drilling | ✓ |

Marking : Longlife Print System, abrasion resistant marking in white with additional metric marking for coils and drums
Pipe ends : smooth
Colour : RAL9005 black with 4 red stripes RAL3002

All information given is indicative only and not binding and can be subject to change without notice.