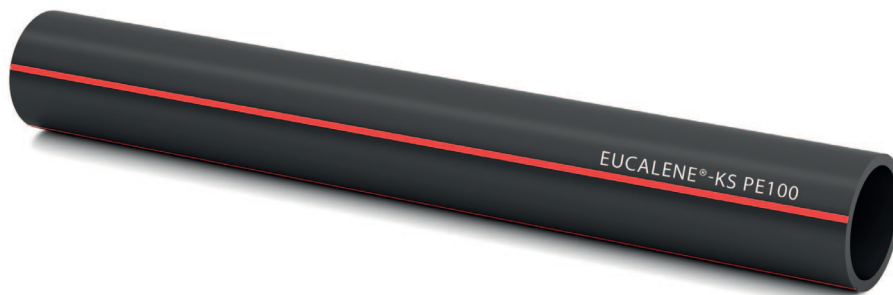




## KS PE100 – Cable protection pipes

according to

**DIN 8074, DIN8075, DIN16842**



Outside diameter in mm	SDR class
63-400	SDR17,6
63-400	SDR13,6
20-400	SDR11

Application	
Permitted installation	EUCALENE®-KS PE100
Open trench installation with sand bed	✓
Open trench installation without sand bed	✓
Ploughing and milling	✓
Relining	✓
Horizontal directional drilling	✓

**Marking :** Longlife Print System, abrasion resistant marking in white with additional metric marking for coils and drums

**Pipe ends :** smooth

**Colour :** RAL9005 black with 4 red stripes RAL3002

All information given is indicative only and not binding and can be subject to change without notice.