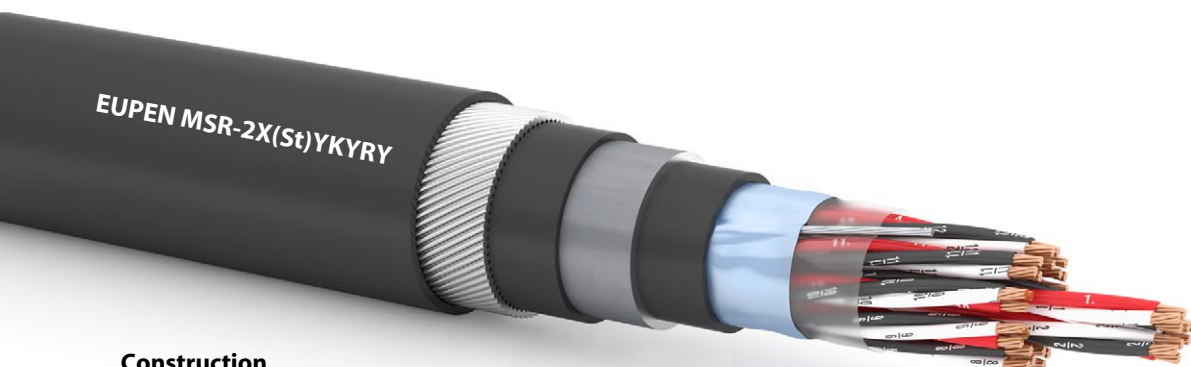


MSR-2X(St)YKYRY

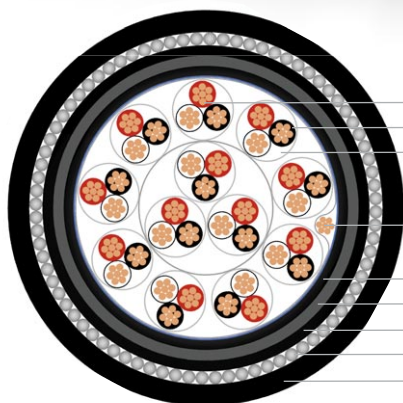
1/1

Reference standard: EN 50288-7

XLPE insulated, triple twisted, overall screened, lead protected and armoured, PVC sheathed instrumentation cable



Construction



1. Conductor: bare stranded copper
2. Insulation: cross-linked PE (XLPE)
3. Cabling elements: triples
colour identification: BLACK/WHITE/RED, each core numbered
Cabling elements assembled in concentric layers
4. Overall screening: laminated Alu/PET tape (9 µm Alu/12 µm PET) in contact with a tinned copper drain wire 0,5 mm² (7x0,30 mm)
5. First inner sheath: flame-retardant PVC
6. Metallic sheath (humidity barrier): lead alloy type "E"
7. Second inner sheath: flame-retardant PVC
8. Armoring: one layer of galvanized steel wires
9. Outer sheath: flame-retardant PVC
Outer sheath color: black or blue or according to customer specification
Outer sheath marking: EUPEN MSR-2X(St)YKYRY 12x3x1,0 mm² 300 V
+ year + meter-marking
or according to customer specification

Electrical Properties

Voltage rating (V)	300 V					
	0,5	0,75	1,0	1,3	1,5	2,5
Conductor cross-section (mm ²)	≤36,7	≤25,0	≤18,5	≤14,2	≤12,3	≤7,56
Conductor resistance @ 20 °C (Ω/km)	<150	<150	<150	<150	<150	<150
Mutual capacitance (nF/km)	<25	<25	<25	<40	<40	<60
L/R ratio (µH/Ω)	1000					
Test voltage core/core (V _{ac})	1000					
Test voltage core/screen (V _{ac})	>5000					
Insulation resistance @ 20 °C (MΩ*km)	>5000					

Laying conditions

Operating temperature	-30 °C to +90 °C
Laying temperature	-5 °C to +50 °C
Min. bending radius	15 x outer diameter
Oil resistance	ICEA S-82-552

Fire behaviour

Fire propagation	IEC 60332-1 (IEC 60332-3 Cat. A or Cat.C on request)
------------------	--

Application

Transmission of analog and digital signals for indoor and outdoor applications. Suitable for strong mechanical and chemical requirements, especially in petrochemical environment.

All information given is indicative only and not binding and can be subject to change without notice.