



# TECHNICAL DATA SHEET

EPC - Eupen Passive Components

Kabelwerk

**EUPEN** AG

Rev.: 04/2019-12-11

cable

## EPC DL - Dummy Loads

### FEATURES and BENEFITS

- Broadband
- Low VSWR
- 1,2 or 10 W (other rating on request)



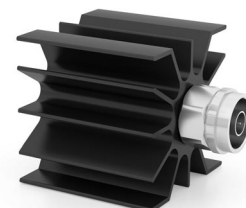
DL-T2-01



DL-T1-01



DL-T2-05



DL-T10-01

### SPECIFICATIONS

• Part Number N-male (EPC)	DL-T1-01	DL-T2-01	DL-T10-01
• Part Number 716-male (EPC)	-	DL-T2-03	DL-T10-03
• Part Number 4.3-10 male (EPC)	-	DL-T2-05	-
• Frequency Range	0 - 6 GHz	0 - 7.5 GHz	0 - 7.5 GHz
• Max. Input power	1 W	2 W	10 W
• Impedance		Nom. 50 Ω	
• Return Loss	≥30.5 dB/1 GHz	>28 dB/7.5 GHz	>28 dB/7.5 GHz
• Climatic category acc. to IEC 60068 - 1		55/155/56	
• Dimensions L x Ø mm	34.5 x 20.8	N-type: 34.5 x 20.8 716-type: 38.0 x 29.0 4.3-10 type: 26.8 x 31	74.0 x 52.0