



DATASHEET

Waveguide Connector

Kabelwerk **EUPEN** AG

DSCW3-Rev00/2009-09-08

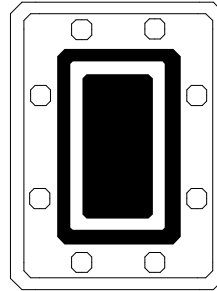
cable

EU 90 Elliptical Waveguide Standard Connector - Gasket

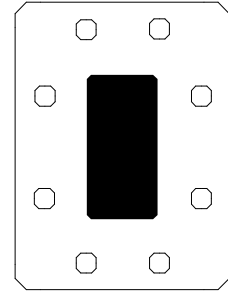
CONNECTOR



FLANGE TYPES



PDR 100
CPR 90-G



UDR 100†
CPR 90-F†

† on request

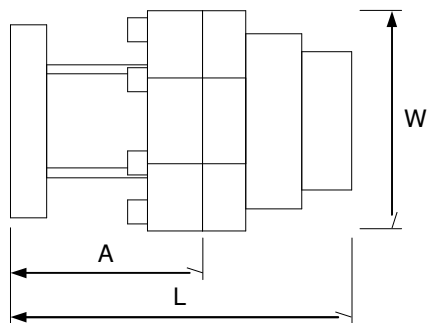
TECHNICAL DATA

Electrical characteristics

•Frequency range [GHz] 8.50 - 11.70

Mechanical characteristics

•Total length "L" [mm] (in) 90 (3.54)
 •Length of transformer section "A" [mm] (in) 50 (1.97)
 •Largest dim. across "W" [mm] (in) 64 (2.52)
 •Weight [kg] (lb) 1.06 (2.34)



Technical data

Gas port P 1/8"
 Temperature range [°C] (°F) -40 to +80 (-40 to +176)
 Connector material Silver plated brass
 Sealing Threaded gasket

TOOL

Light-weight handheld flaring tool with saw guide

PRODUCT OVERVIEW

Description	Reference
•Connector	EU90-G-PDR100 EU90-G-CPR90-G EU90-G-UDR100 EU90-G-CPR90-F
•Flaring Tool	EU-FT-2
•Saw guide	EU-SG90
•Flaring tool adapter	EU-FTA90
•Shim* for PDR flange	EU-SH100
•Full thickness gasket**	EU-FGK90
•Half thickness gasket**	EU-HGK90

* Use shim when mating two PDR flanges. Not required when mating PDR/UDR. Order separately.

**Use full-thickness gasket (supplied with the connector) when mating two CPR-G flanges. Use half-thickness gasket (order separately) when mating CPR-G with CPR-F.

