



# DATASHEET

## Waveguide Connector

Kabelwerk **EUPEN** AG

DSCW1-Rev00/2009-09-08

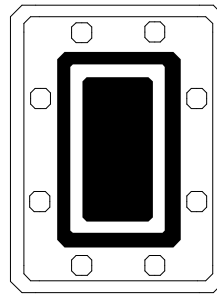
cable

### EU 63 Elliptical Waveguide Standard Connector - Gasket

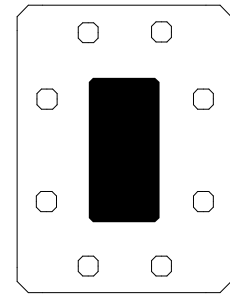
#### CONNECTOR



#### FLANGE TYPES



PDR 70  
CPR 137-G



UDR 70<sup>†</sup>  
CPR 137-F<sup>†</sup>

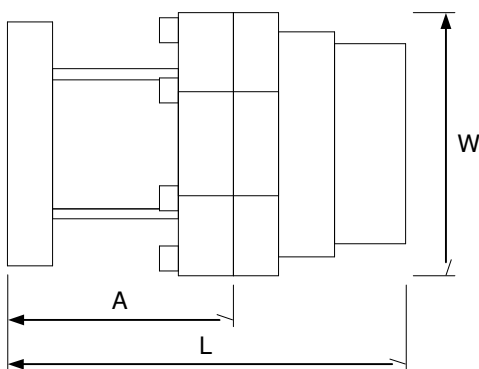
† on request

#### TECHNICAL DATA

Electrical characteristics	
•Frequency range [GHz]	5.70 - 7.75
Mechanical characteristics	
•Total length "L" [mm] (in)	105 (4.13)
•Length of transformer section "A" [mm] (in)	60 (2.36)
•Largest dim. across "W" [mm] (in)	79 (3.11)
•Weight [kg] (lb)	1.74 (3.84)

#### TOOL

Light-weight handheld flaring tool with saw guide



Technical data	
Gas port	P 1/8"
Temperature range [°C] (°F)	-40 to +80 (-40 to +176)
Connector material	Silver plated brass
Sealing	Threaded gasket

#### PRODUCT OVERVIEW

Description	Reference
•Connector	EU63-G-PDR70 EU63-G-CPR137-G EU63-G-UDR70 EU63-G-CPR137-F
•Flaring Tool	EU-FT-1
•Saw guide	EU-SG63
•Flaring tool adapter	EU-FTA63
•Shim* for PDR flange	EU-SH70
•Full thickness gasket**	EU-FGK137
•Half thickness gasket**	EU-HGK137

\* Use shim when mating two PDR flanges. Not required when mating PDR/UDR. Order separately.

\*\*Use full-thickness gasket (supplied with the connector) when mating two CPR-G flanges. Use half-thickness gasket (order separately) when mating CPR-G with CPR-F.

