



DATASHEET

Waveguide Connector

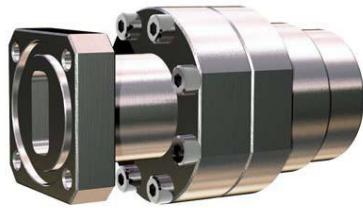
Kabelwerk **EUPEN** AG

DSCW4-Rev00/2009-09-08

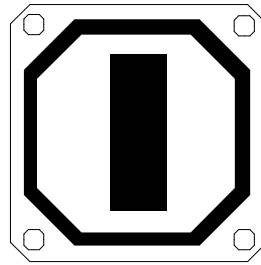
cable

EU 127 Elliptical Waveguide Standard Connector - Gasket

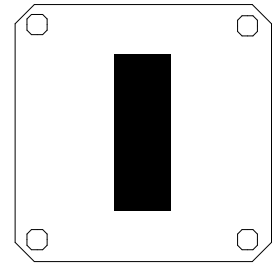
CONNECTOR



FLANGE TYPES



PBR 120
CPR 75-G



UBR 120[†]
CPR 75-F[†]

[†] on request

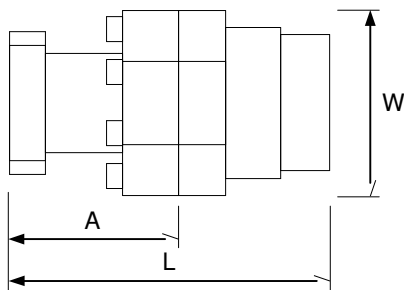
TECHNICAL DATA

Electrical characteristics

•Frequency range [GHz]	11.70 - 13.25
------------------------	---------------

Mechanical characteristics

•Total length "L" [mm] (in)	85 (3.35)
•Length of transformer section "A" [mm] (in)	45 (1.77)
•Largest dim. across "W" [mm] (in)	49 (1.93)
•Weight [kg] (lb)	0.65 (1.43)



Technical data

Gas port	P 1/8"
Temperature range [°C] (°F)	-40 to +80 (-40 to +176)
Connector material	Silver plated brass
Sealing	Threaded gasket

TOOL

Light-weight handheld flaring tool with saw guide

PRODUCT OVERVIEW

Description	Reference
•Connector	EU127-G-PBR120 EU127-G-CPR75-G EU127-G-UBR120 EU127-G-CPR75-F
•Flaring Tool	EU-FT-2
•Saw guide	EU-SG127
•Flaring tool adapter	EU-FTA127
•Shim* for PDR flange	EU-SH120
•Full thickness gasket**	EU-FGK75
•Half thickness gasket**	EU-HGK75

* Use shim when mating two PBR flanges. Not required when mating PBR/UBR. Order separately.

**Use full-thickness gasket (supplied with the connector) when mating two CPR-G flanges. Use half-thickness gasket (order separately) when mating CPR-G with CPR-F.

