



DATA SHEET

Premium connector for waveguides

Kabelwerk | **EUPEN** AG

Rev.: 02/2011-09-21

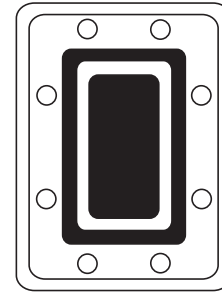
cable

EU 90 Elliptical Waveguide

CONNECTOR



FLANGE TYPE



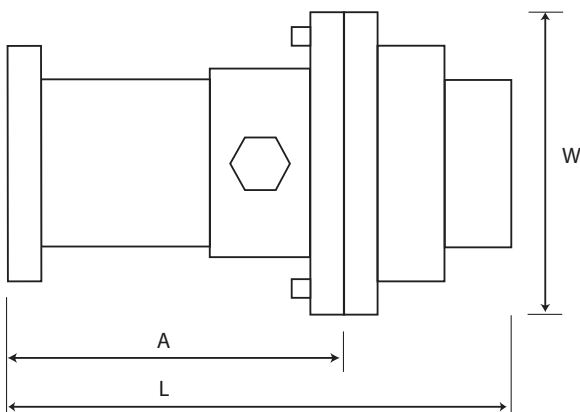
PDR 100
CPR 90-G

Electrical characteristics

- **Frequency range** GHz 10.2 - 11.7
- **VSWR** (gated measurement) < 1.03

Mechanical characteristics

- **Total length "L"** mm (in) 105 (4.13)
- **Length of transformer section "A"** mm (in) 67 (2.64)
- **Largest dim. across "W"** mm (in) 70 (2.76)
- **Weight** kg (lb) 0.45 (1.00)



- **Max pressure** Bar (psi) 1.25 (18.1)
- **Gas port** P 1/8"
- **Temperature range** °F (°C) -40 / +176 (-40 / +80)
- **Connector material** brass

TOOL

Light-weight handheld flaring tool with saw guide



Part numbers

Connector	EU90-P-CPR90-G EU90-P-PDR100
Flaring Tool	EU-FT90-P
Saw guide	EU-SG90
Shim* for PDR flange	EU-SH90
Full thickness gasket** for CPR flange	EU-FGK90
Half thickness gasket** for CPR flange	EU-HGK90

* Use shim when mating two PDR flanges. Not required when mating PDR/UDR. Order separately.

** Use full-thickness gasket (supplied with connector) when mating two CPR-G flanges. Use half-thickness gasket (order separately) when mating CPR-G with CPR-F.